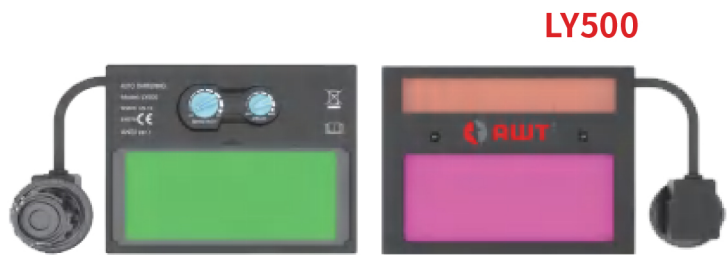


AWT-09-500



Optical Class	1/1/1/2
Cartridge Size	110×90×9mm
Viewing Area	92.5×42.5mm(3.64"×1.67")
Light State	DIN3.5
Dark State	DIN9~13
Shade Control	External & Stepless
Switching Time	3/10000S±20%
Sensitivity Control	Internal & Stepless
Delay Time	0.1S~0.8S
Power Supply	Li-battery&Solar
Rated Capacity Of Li-Battery	600mAh
Replaceable Battery	No
Arc Sensor	2
Low Amperage TIG Rated	≥5amps
UV/IR Protection	DIN13
Self Test	No
Low Battery	No
Grinding	No
Cuting	No